

NAVTEX

Dual-channel NAVTEX Receiver



Models:

NX-700A (Message display with printer)

NX-700B (Message display unit)

NAVTEX

Dual-channel NAVTEX Receiver

Enhances the navigation messages broadcast



Model: NX-700A (Display with printer)



Model: NX-700B (Display only)



Antenna Unit



Receiver Unit

Dual-channel NAVTEX Receiver

Models: **NX-700A/B**

► Full compliance with IMO Resolutions and IEC Testing Standards

IMO Resolutions	IEC Testing Standards	
A.694(17)	60945 Ed. 4.0	62288 Ed. 2.0
MSC.148(77)	61097-6 Ed. 2.0	62923-1 Ed. 1.0
MSC.302(87)	61162-1 Ed. 5.0	62923-2 Ed. 1.0
MSC.430(98)	61162-2 Ed. 1.0	

- Incorporates a preamp within a lightweight, compact antenna for reliable, uninterrupted reception
- Display messages on a clear 5" silver bright LCD
- Low power consumption
- NAV data display acts as NMEA repeater for GPS or instruments

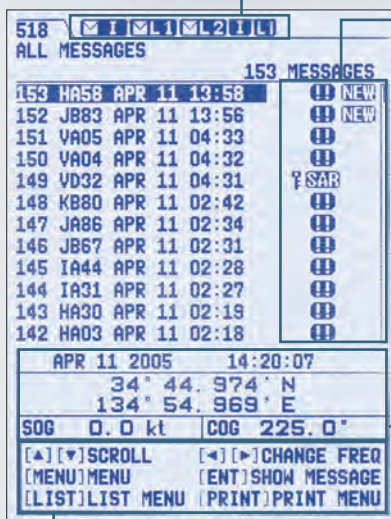


Operators can print out important messages by pressing a dedicated "PRINT" button.

on efficiency and safety by watching NAVTEX d on both international and local channels



Message inbox



Guide for key controls

Status icons Message icons

All received messages with a selected channel information are sorted by order of time in the message inbox. Operators can easily know the status of each message from the message ID and icons. When receiving SAR information, NX-700 notifies of the incoming messages by audible alarm. For quick viewing, operators can pick up messages they are interested in and display them by using the sort function.

NavData window

Essential navigational data is clearly displayed at the bottom of display when connected with a positioning equipment.

Icons

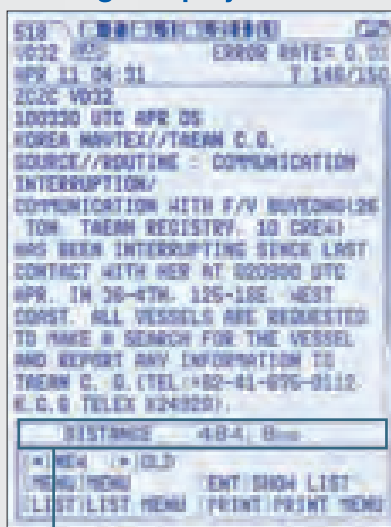
Status icon

	Shows that an International frequency (518 kHz) message has not been read.
	Shows that a Local frequency message has not been read. L1: 490 kHz, L2: 4209.5 kHz
	Displayed while the NAVTEX is receiving a message. I: International frequency (518 kHz), L1 : 490 kHz, L2: 4209.5 kHz
	Displayed when the battery voltage is low.
	Print error (no paper, not connected to the printer, etc.)
	While printing.

Message icon

	Displayed when message has not been read yet.
	Displayed when message type D (SAR) is received.
	Displayed when message type A, B or L (Warning) is received.
	Protected message

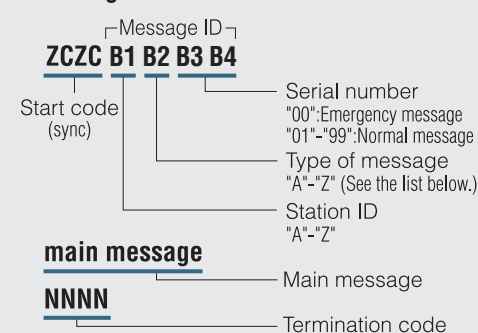
Message display



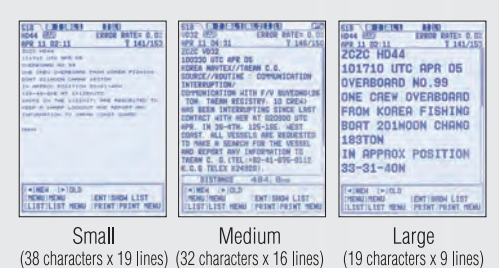
Distance window

Shows distance from own ship to a position of event, which is mentioned in message. This enables swift understanding of whether the position is nearby own ship or not.

Message format



Fonts



Three font sizes are available for convenience of the operation.

Type of message (category)

A	Navigational warning	H	LORAN-C message
B	Meteorological warning	I	reserved presently not used
C	Ice report	J	SATNAV message
D	Search and rescue information/ piracy and armed robbery	K	Other electronic navigational aid system message
E	Meteorological forecast	L	Navigational warning (additional)
F	Pilot message	M to Y	Reserve-presently not used
G	AIS	Z	QRU (no message on hand)

SPECIFICATIONS

PRODUCT NAME NAVTEX RECEIVER

Receiving Frequency	518 kHz and 490 kHz (or 4209.5 kHz), receive both frequencies simultaneously
Mode of Reception	F1B
Sensitivity	2 μ V e.m.f. (50 ohms), 4% error rate
Input Protection	Withstands 30 Vrms for 15 min or more (w/ preamp unit)
Spurious Emission	1 nW or less
Message Category	A : Navigation warning B : Meteorological warning C : Ice report D : Search and rescue information/ piracy and armed robbery E : Meteorological forecast F : Pilot message G : AIS H : Loran-C message I : reserved presently not used J : SATNAV message K : Other electronic navigational aid and system message L : Navigational warning (additional) M to Y: Reserved - presently not used Z : QRU (no message on hand)

DISPLAY

Screen Size	5" monochrome LCD, 76 x 100 mm
Resolution	240(H) x 320(V)
Display Modes	Message selection mode Message display mode
Message Storage	200 messages x 2 channels (100,000 characters x 2 channels)

PRINTER SECTION (for NX-700A)

Printing System	Line thermal head printing system
Printing Paper	Thermal paper (58 mm x 30 m)
Printing Width	48 mm
Character Format	24 x 12 dot
Dot Pitch	8 dots/mm
Number of Characters	32 characters/line
Print Speed	Approx. 20 mm/sec.

ANTENNA UNIT

Antenna Type	NX-7H: H-field antenna
Output Impedance	50 ohms
Power Supply	+7 V to +9 V (thru coax. cable)

INTERFACE

Input	IEC61162-1/2 ACK, ACN, CRQ, GGA, GLL, GNS, HBT, NRM, RMC, VBW, VHW, VTG, ZDA, PFEC
Output	ALC, ALF, ALR, ARC, HBT, NRM, NRX
Alarm	Normal close, contact closure signal(floating, max 80mA, 50V) for SAR alert RS-232C(NX-700B only)

Printer

POWER SUPPLY

NX-700A:	12-24 VDC, 1.5-0.8 A
NX-700B:	12-24 VDC, 0.7-0.4 A

ENVIRONMENT (fully complied with IEC 60945 3rd/4th ed.)

Temperature	Antenna Unit: -25°C to +70°C Receiver, Display Unit: -15°C to +55°C
Waterproofing	Antenna Unit: IP66 Receiver Unit: IP20 Display Unit: NX-700A IP20 NX-700B IP25(front panel)

EQUIPMENT LIST

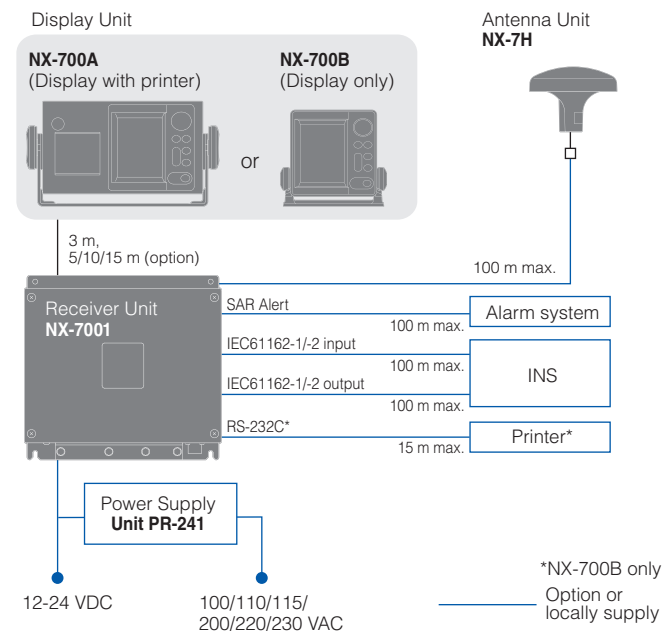
Standard

1. Receiver Unit NX-7001 1 unit
2. Antenna Unit NX-7H 1 unit
3. Display Unit with Bracket (Specify when ordering) 1 unit
NX-700A: Display with Printer, NX-700B: Display only
4. Installation Materials and Spare Parts 1 set

Option

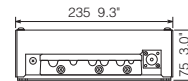
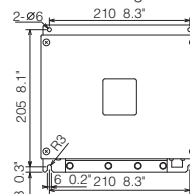
1. Antenna Mounting Base
Pipe mount: CP20-01111
Deck mount: 13-QA330
Handrail mount 13-RC5160
Offset bracket: 13-QA310
2. Cable for Antenna
RG-10/U-Y, 30/40/50 m
3. Cable for Display Unit
D-Sub 25P to D-Sub 25P, 3/5/10/15 m
4. Flush Mount Kit for Display Unit
for NX-700A: OP08-19
for NX-700B: OP08-20
5. Power Supply Unit PR-241
6. Thermal Paper for NX-700A

INTERCONNECTION DIAGRAM



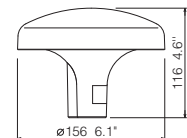
Receiver Unit

NX-7001 2.0 kg 4.4 lb



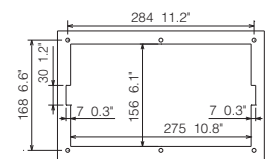
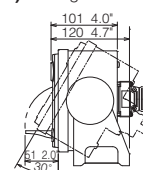
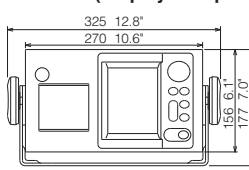
Antenna Unit

NX-7H 0.6 kg 1.3 lb

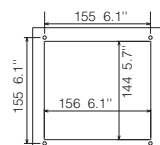
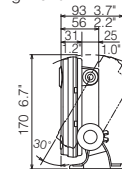
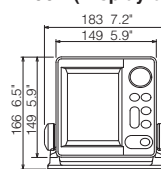


Display Unit

NX-700A (Display with printer) 3.3 kg 7.3 lb



NX-700B (Display only) 0.7 kg 1.5 lb



All brand and product names are registered trademarks, trademarks or service marks of their respective holders.

SPECIFICATIONS SUBJECT TO CHANGE WITHOUT NOTICE

FURUNO ELECTRIC CO., LTD.
Japan | www.furuno.com

FURUNO U.S.A., INC.
U.S.A. | www.furunousa.com

FURUNO PANAMA S.A.
Republic of Panama | www.furuno.com.pa

FURUNO (UK) LIMITED
U.K. | www.furuno.co.uk

FURUNO NORGE A/S
Norway | www.furuno.no

FURUNO DANMARK A/S
Denmark | www.furuno.dk

FURUNO SVERIGE AB
Sweden | www.furuno.se

FURUNO FINLAND OY
Finland | www.furuno.fi

FURUNO POLSKA Sp. z o.o.
Poland | www.furuno.pl

FURUNO DEUTSCHLAND GmbH
Germany | www.furuno.de

FURUNO FRANCE S.A.S.
France | www.furuno.fr

FURUNO ESPAÑA S.A.
Spain | www.furuno.es

FURUNO ITALIA S.R.L.
Italy | www.furuno.it

FURUNO HELLAS S.A.
Greece | www.furuno.gr

FURUNO (CYPRUS) LTD
Cyprus | www.furuno.com.cy

FURUNO EURUS LLC
Russian Federation | www.furuno.ru

FURUNO SHANGHAI CO., LTD.
China | www.furuno.com/cn

FURUNO CHINA CO., LTD.
Hong Kong | www.furuno.com/cn

FURUNO KOREA CO., LTD
Korea

FURUNO SINGAPORE
Singapore | www.furuno.sg

PT FURUNO ELECTRIC INDONESIA
Indonesia | www.furuno.id

FURUNO ELECTRIC (MALAYSIA)

SDN. BHD.
Malaysia | www.furuno.my