

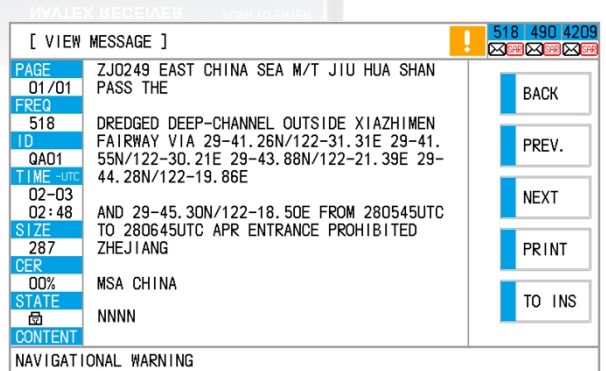
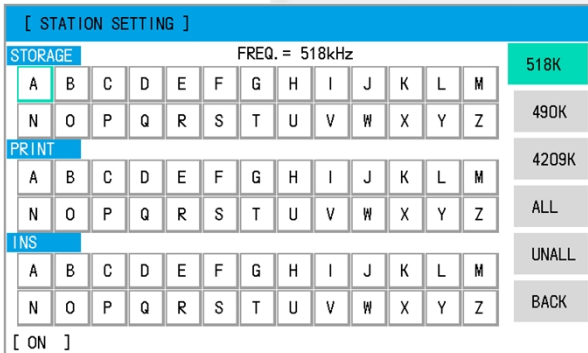
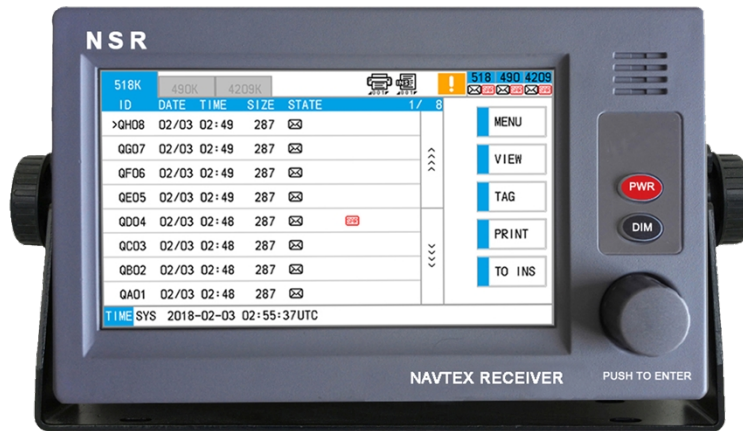
NAVTEX RECEIVER

NVX-1000/NVX-3000

NSR's new generation of NAVTEX Receiver:

- SDR (Software Defined Radio) technology, super sensitivity
- Large 7 inch color LCD, touch screen operation
- Meet the latest rules: IMO MSC.430 (98), IMO MSC.302 (87), IEC 62923-1, IEC 62923-2
- Real three-channel receiving
- Data interface to BAM system/INS
- Type approval with DNV (MED), CCS, RS and VR

NVX-1000	DNV, CCS, RS, VR
NVX-3000	DNV, RS,



FEATURES

- Large 7 inch color LCD.
- Receive on three IMO NAVTEX frequencies (518 kHz, 490 kHz and 4209.5 kHz) simultaneously.
- Displays the message contents.
- Messages stored for 72 hours.
- Simple to operate by touch screen.
- Desktop or flush mount.
- External printer/NMEA/BAM/INS interface and External alarm output.
- Low power consumption.
- Self-diagnosis function.

EQUIPMENT LIST

● STANDARD

- Receiver 1 pc
- Loop Antenna (NXA200) 1 pc
- Accessories 1 set

● OPTIONS

- Printer (NPT-100) 1 pc
- AC/DC PSU (PS-10) 1 pc
- Flush Mount Bracket 1 pc

SPECIFICATIONS

● NAVTEX RECEIVER

- Receiving Frequencies: 518 kHz, 490 kHz & 4209.5 kHz, to receive on three channels simultaneously
- Mode of Reception: F1B
- Sensitivity: Better than -107 dBm

● DISPLAY

- Display System: 7 inch, color LCD, touch screen operation, 154 (W)×87 (H) mm
- Resolution: 800 x 480

● ENVIRONMENTAL CONDITIONS

- Temperature Range: -20°C ~ +55°C operating, -30°C ~ +70°C storage (Antenna)
- IP Grade: IP22 (Receiver), IP66 (Antenna)
- Compass Safe Distance: 1.15 m (standard)

● INTERFACE

- Input Sentences of NMEA IN Port: ZDA, RMC
- Input Sentences of BAM/INS Port: NRM, CRQ, ACK, ACN
- Output Sentences of BAM/INS Port: ALR, NRX, NRM, ACN, ACK, ALF, ALC, ARC, HBT

● POWER SUPPLY:

DC 24 V (10 V ~ 38 V, 10 W average)

● WEIGHT:

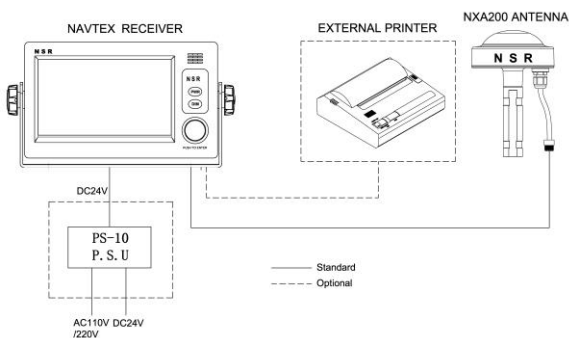
2.3 kg (Receiver)

● SIZE:

264 (W)×145 (H)×83 (D) mm (Receiver)



SYSTEM DIAGRAM



SIZE DIMENSION

