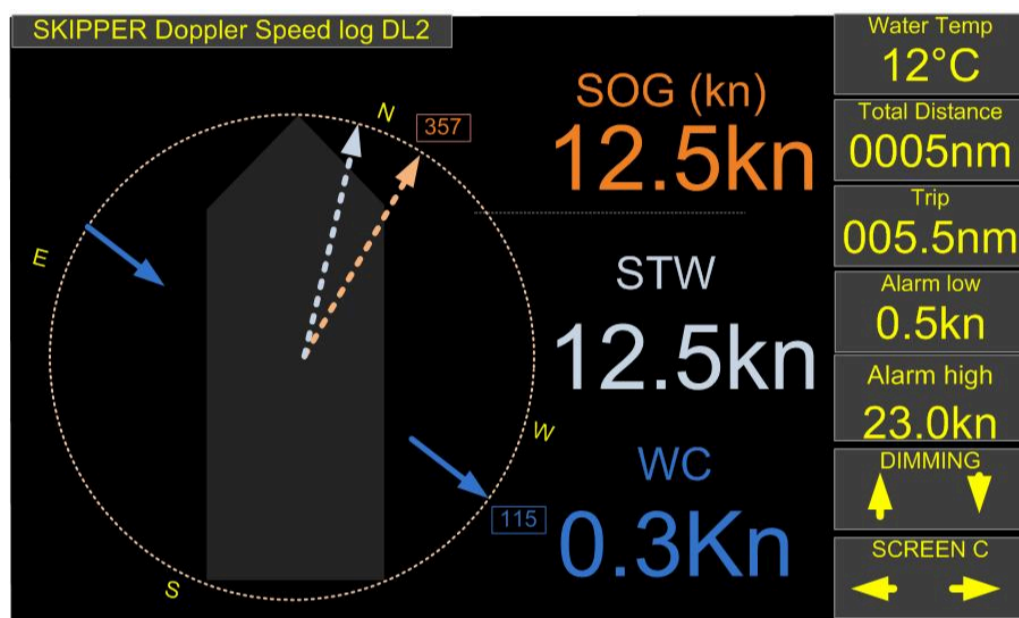


Navigation Speed Logs

SKIPPER DL2



- ★ IMO Wheelmarked with MED-B
- ★ Water speed log in dual axis (STW)
- ★ Ground speed in dual axis (SOG)
- ★ Docking functionality as standard (Three axis in STW and SOG)
- ★ Sea Temperature readout from sensor
- ★ Touch Display
- ★ RMRS and CCS available on request
- ★ LAN and NMEA0183 output
- ★ User friendly programmable displays and integrated menus
- ★ Fully automatic settings
- ★ Resultant Sea Current in Speed and Direction

The SKIPPER DL2 is a Dual Axis Doppler Speed Log, working on the doppler principle, providing longitudinal and transversal ship's speed (STW and SOG) and distance relative to sea water. The SKIPPER DL2 gives accurate navigation parameters, measured as they happen, and presented in a logical, user friendly way.

Specifications:

Speed Log: DL2
Number of Axis: 2 and 3
Speed range longitudinal: +/- 50 knots
Speed range transversal: +/-50 knots
Water track (from): 2 meter
Temperature accuracy error: <1°C
Power Supply: AC:115-230 V 50/60 Hz DC: 24 V
Power Consumption: Max 30 W for complete speed log
Display: 9" touch
Mounting dimensions display: 190x119x114 mm. Bracket or panel mounting
Accuracy (Better than): 0.2 knots or 2% whichever is greater
Accuracy: 1% available as an option
Weight: 1.4 kgs for display 1.5 kgs for electronic unit 10 kgs for sensor and 40 m cable
Standard cable length: None (max 100 m) for display 40 m for sensor
Mounting options: <ul style="list-style-type: none">★ Steel Tank★ Aluminium tank★ 100 mm Sea Valve for single bottom★ 100 mm Sea Valve for double bottom★ DL850 540 kHz retrofit in ETNSLB★ Atlas Dolog 2x retrofit★ Sperry SRD 421/500 retrofit★ DS-630 in DS-661 for Furuno DS-60/50 retrofit
Speed alarms: <ul style="list-style-type: none">★ High and low speed limits★ Power failure★ Sensor failure
Outputs: <ul style="list-style-type: none">★ 2xLAN (IEC61162-450)★ 4xNMEA0183 (IEC61162-1)



★ 2xAuxiliary (pulse, limit etc)

★ 1xRelay (Alarm etc.)

★ 2xLAN (IEC61162-450)

★ 2xNMEA0183 (IEC61162-1)

★ 1xAuxiliary_(alarm, sync etc.)

NMEA Outputs:

★ Speed: VBW and VHW

★ Distance: VLW

★ Others: MTW (Temperature)

Classification:

★ IMO Wheelmarked

★ CCS on request

★ RMRS on request.

★ MED-B

★ IEC61023, IEC60945, IEC61162-1/2/450, IEC62288 and ready for IEC61924

Service:

Available in most major harbours, world-wide through extensive dealer network

Downloads available:

[Product Brochure](#)

[Operation and Installation Manual](#)

[Certificates](#)

[Additional Installation Documents](#)

One full system consist of:

Display option:

CU-M001-SB Touch



Sensor options:

DL2SG-SA for 100 mm Sea Valve

DL2ST-SA for Steel Tank

DL2STA-SA for Aluminium Tank

DL2SDR-SA for Atlas Dolog 2x retrofit

DL2SE-SA for ETNSLB retrofit

DL2SW-SA for Sperry SRD 421/500 retrofit

DL2STR-SA for Steel tank retrofit with diver

DL2SC-SA Log sensor DL2 SKIPPER retrofit SAL860 (T2)

DL2SF-SA DL2 sensor for DS-630 in DS-661 for Furuno DS-60





Electronic Unit options:

JB70D2-SA Standard

JB70D2-SA-OPT For extra options

Extra options software:

JB70D2-OPT-IPC - 1% accuracy

JB70D2-OPT-SYNC - Sync features



Bottom housings:

SB-100-SB Sea Valve for single bottom

DB-100-SB Sea Valve for double bottom

ETNSTCL Steel Tank

ETNALC Aluminium Tank



